

**DENNY
CHRISTENSON
& ASSOCIATES
ARCHITECTS**

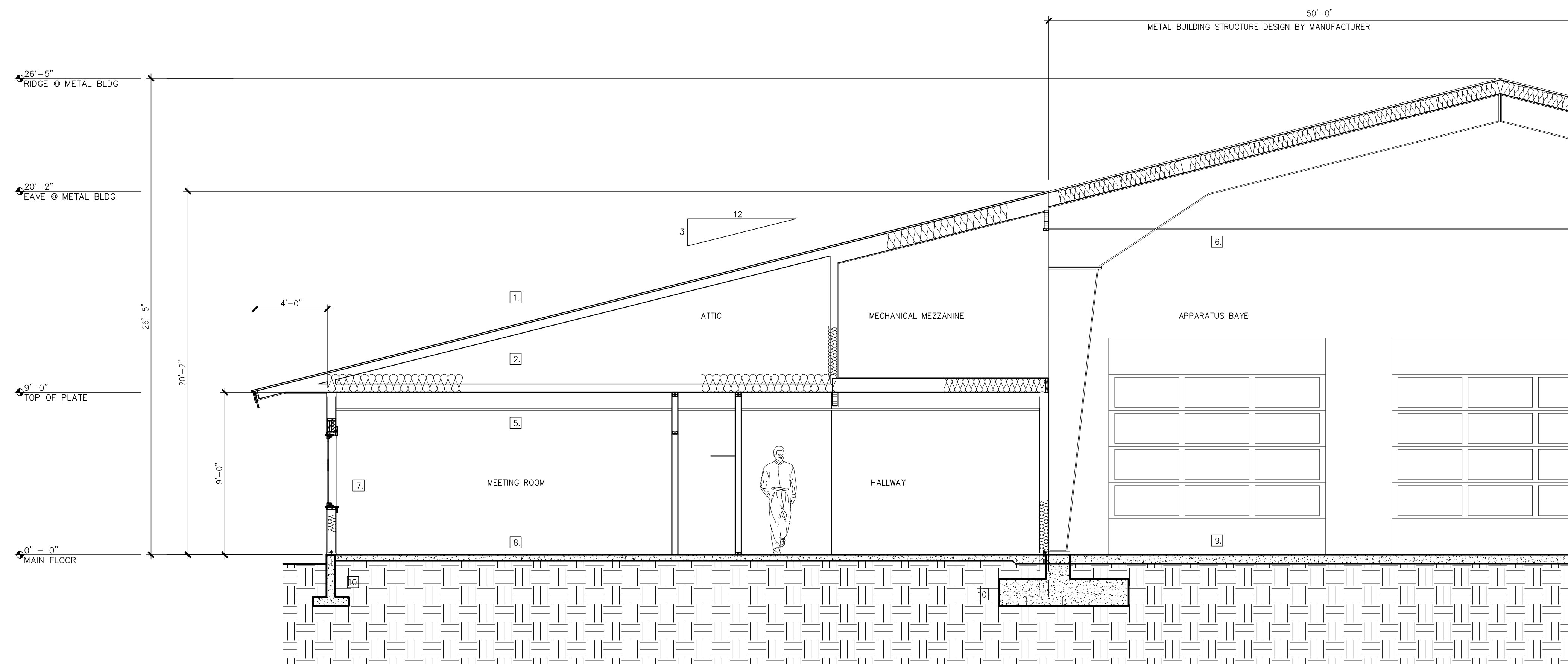
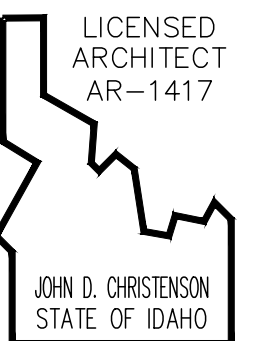
9708 North Nevada St.

Suite # 002

Spokane, WA 99218

P > 509.744.0979

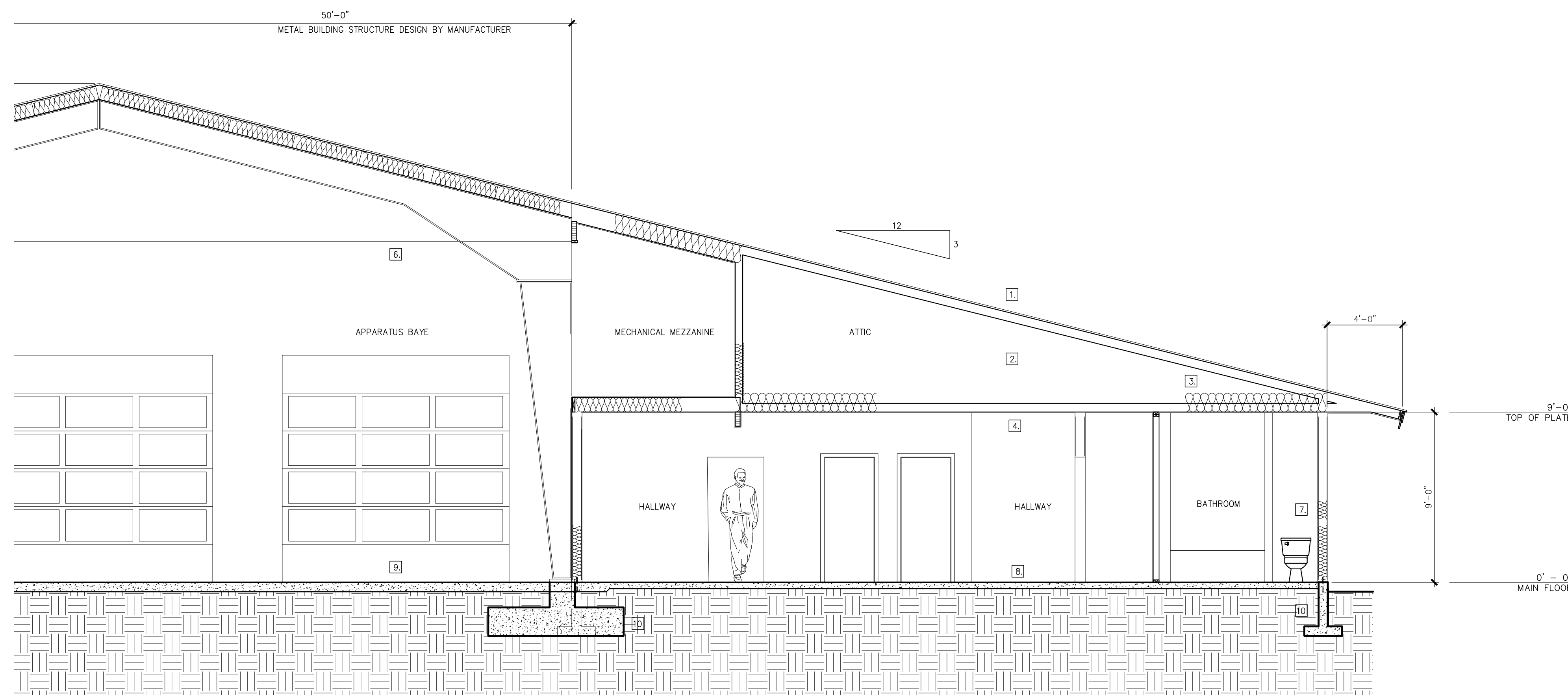
IN ASSOCIATION WITH



BUILDING SECTION A-A (south)
SCALE: 1/4" = 1'-0"

**KEYED NOTES
BUILDING SECTIONS**

1. 24 GA. STANDING SEAM METAL ROOFING
2. MANUFACTURED ROOF TRUSSES @ 24" OC
3. 12" R-30 BLOWN-IN INSULATION
4. 5/8" GWB/6 MIL VAPOR BARRIER
5. SUSPENDED ACCOUSTICAL TILE @ 8'-0" AFF
6. SUSPENDED ACCOUSTICAL TILE @ 18'-0" AFF
7. TYP EXT WALL: 1/2" GWB/6 MIL VB/2X6@16" OC/15/32 SHEATHING/BLDG WRAP (SEE EXTERIOR ELEVATIONS FOR EXTERIOR FINISHES)
8. 4" GLASS FIBER REINFORCED CONC/6 MIL VAPOR BARRIER/4" 3/4 MINUS GRAVEL
9. 6" CONC W/#5 REBAR @10" EW/ 6 MIL VAPOR BARRIER/ 4" 3/4 MINUS GRAVEL
10. TYPICAL FOUNDATION
24"X8" FOOTING W/ (2) #4 CONT
6" STEM, WALL WITH #4 VERTICAL REBAR @ 18" OC & #4 HORIZONTAL REBAR @ 12" OC
11. METAL FRAME FOUNDATION, DESIGN BY BUILDING MANUFACTURER
12. TURN OUT STORAGE



BUILDING SECTION A-A (north)
SCALE: 1/4" = 1'-0"

REVISIONS

| # | DESCRIPTION | DATE |
|---|-------------|------|
| | | |
| | | |
| | | |

**INDIAN CREEK
FIRE STATION**
 L 1, BLK 2 PINTO POINT SUBDIVISION
 COOLIN-CAVANAUGH BAY FIRE DIST.
 SCHEMATIC PLANS
 BUILDING SECTIONS

DRAWN BY JDC

DATE 2017.01.30

CHECKED BY _ _ _

PROJECT # 1700

SHEET # A3.21