

**DENNY
CHRISTENSON
& ASSOCIATES
ARCHITECTS**

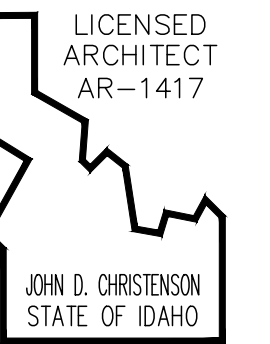
9708 North Nevada St.

Suite # 002

Spokane, WA 99218

P > 509.744.0979

IN ASSOCIATION WITH



REVISIONS

#	DESCRIPTION	DATE

INDIAN CREEK
FIRE STATION
L 1, BLK 2 PINTO POINT SUBDIVISION
COOLIN-CAVANAUGH BAY FIRE DIST.
SCHEMATIC PLANS
SITE

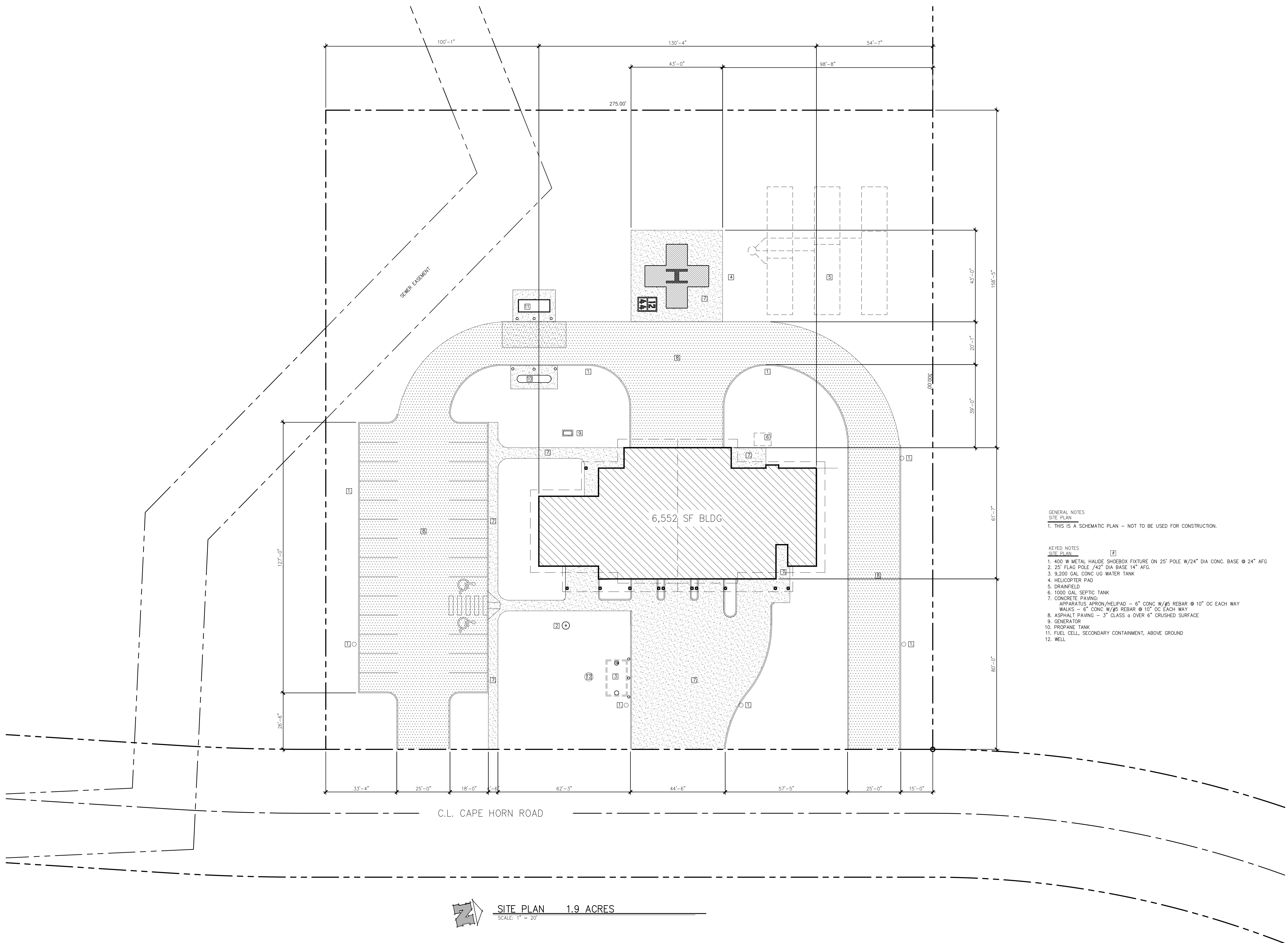
DRAWN BY JDC

DATE 2017.01.30

CHECKED BY

PROJECT # 1700

SHEET # A1.11



GENERAL NOTES
SITE PLAN
1. THIS IS A SCHEMATIC PLAN - NOT TO BE USED FOR CONSTRUCTION.

- KEYED NOTES
SITE PLAN
- 400 W METAL HALIDE SHOEBOX FIXTURE ON 25" POLE W/24" DIA CONC. BASE @ 24" AFG
 - 25' FLAG POLE /42" DIA BASE 14" AFG.
 - 9,200 GAL CONC UG WATER TANK
 - HELICOPTER PAD
 - DRAINFIELD
 - 1000 GAL SEPTIC TANK
 - CONCRETE PAVING:
APPARATUS APRON/HELIPAD - 6" CONC W/#5 REBAR @ 10" OC EACH WAY
WALKS - 6" CONC W/#5 REBAR @ 10" OC EACH WAY
 - ASPHALT PAVING - 3" CLASS @ OVER 6" CRUSHED SURFACE
 - GENERATOR
 - PROPANE TANK
 - FUEL CELL, SECONDARY CONTAINMENT, ABOVE GROUND
 - WELL

SITE PLAN 1.9 ACRES
SCALE: 1" = 20'